

AA 18 E

Truckmounted Platforms

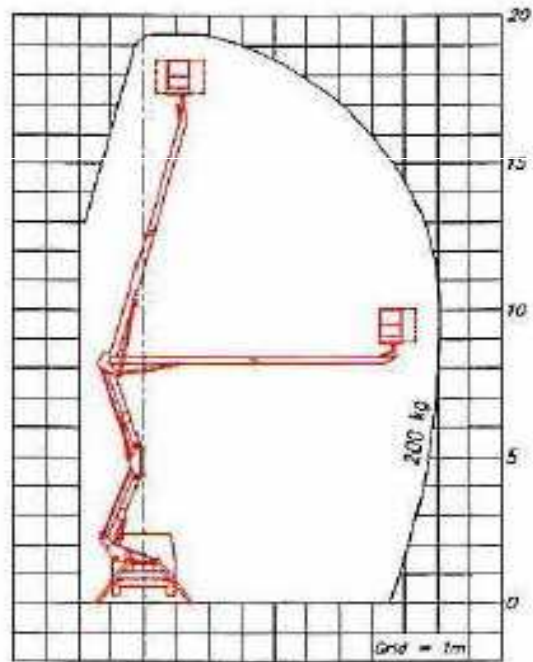
- Articulated (AA18) and Telescopic (TA 15) versions
- Drivable with a B license
- Basket controls
- Multi axle device for visual check of the stabilization of the chassis
- Anti-overturning device with dual safety control and proper function check system
- Manual emergency pump
- Load limiting device
- 230V Electric socket in the basket
- Electrical Rotation + / - 90 °

Truckmounted Platforms 18 m

SOCAGE DA320

AA 18 E

| | |
|---------------------------|----------|
| Working height (m) | 19.40 |
| Platform height (m) | 17.40 |
| Outreach / Extension (m) | 9.00 |
| Lift capacity (kg) | 200 |
| Total Weight (kg) | 3500 |
| Platform size (cm) | 140 x 70 |
| Turret rotation (°) | 700 |
| Travel / transport length | 6.70 |
| Travel / transport height | 2.70 |



AA 18 E - New

Truckmounted Platforms

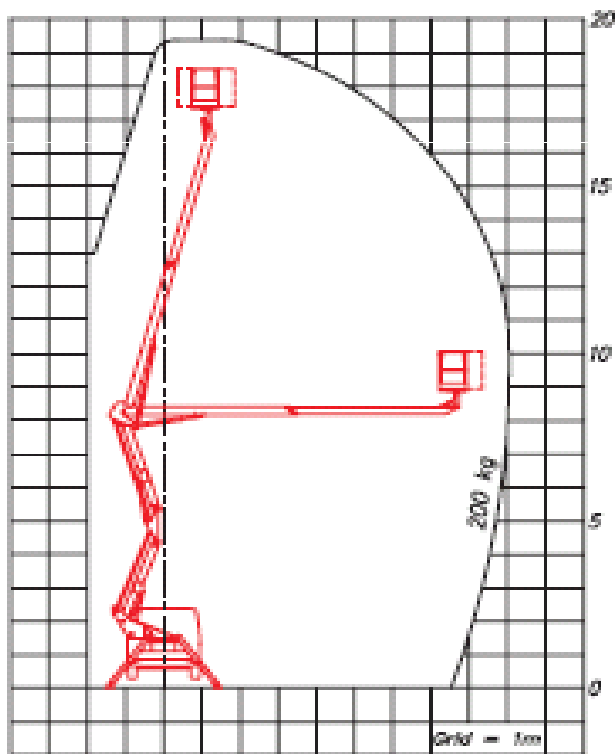
- Articulated (AA18) and Telescopic (TA 15) versions
- Drivable with a B license
- Basket controls
- Multi axle device for visual check of the stabilization of the chassis
- Anti-overturning device with dual safety control and proper function check system
- Manual emergency pump
- Load limiting device
- 230V Electric socket in the basket
- Electrical Rotation + / - 90 °

Truckmounted Platforms 18 m

SOCAGE APACHE DA20

AA 18 E - New

| | |
|---------------------------|----------|
| Working height (m) | 20.00 |
| Platform height (m) | 18.00 |
| Outreach / Extension (m) | 9.50 |
| Lift capacity (kg) | 225 |
| Total Weight (kg) | 3500 |
| Platform size (cm) | 140 x 70 |
| Turret rotation (°) | continua |
| Travel / transport length | 6.24 |
| Travel / transport height | 2.70 |



AA 18 M

Truckmounted Platforms

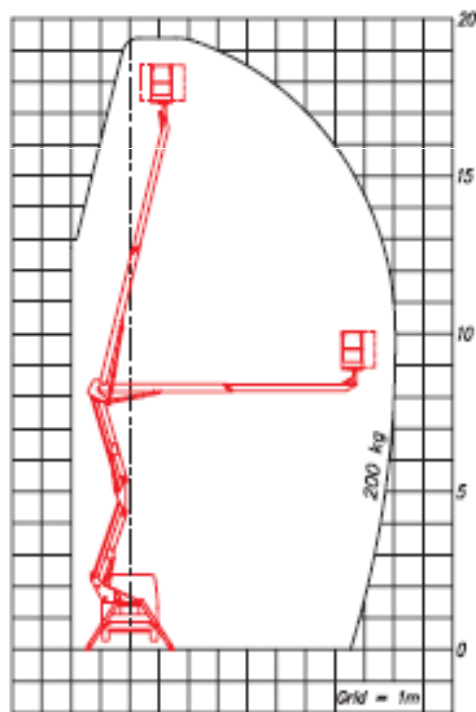
- Articulated (AA18) and Telescopic (TA 15) versions
- Drivable with a B license
- Basket controls
- Multi axle device for visual check of the stabilization of the chassis
- Anti-overturning device with dual safety control and proper function check system
- Manual emergency pump
- Load limiting device
- 230V Electric socket in the basket
- Electrical Rotation + / - 90 °

Truckmounted Platforms 18 m

CMC TBX 20

AA 18 M

| | |
|---------------------------|----------|
| Working height (m) | 19.70 |
| Platform height (m) | 17.70 |
| Outreach / Extension (m) | 9.00 |
| Lift capacity (kg) | 200 |
| Total Weight (kg) | 3500 |
| Platform size (cm) | 140 x 60 |
| Turret rotation (°) | 720 |
| Travel / transport length | 6.64 |
| Travel / transport height | 2.87 |



AA 18 Z

Truckmounted Platforms

- Articulated (AA18) and Telescopic (TA 15) versions
- Drivable with a B license
- Basket controls
- Multi axle device for visual check of the stabilization of the chassis
- Anti-overturning device with dual safety control and proper function check system
- Manual emergency pump
- Load limiting device
- 230V Electric socket in the basket
- Electrical Rotation + / - 90 °

Truckmounted Platforms 18 m

SEQUANI ZED 20 C

AA 18 Z

| | |
|---------------------------|----------|
| Working height (m) | 20.00 |
| Platform height (m) | 18.00 |
| Outreach / Extension (m) | 9.20 |
| Lift capacity (kg) | 200 |
| Total Weight (kg) | 3500 |
| Platform size (cm) | 140 x 70 |
| Turret rotation (°) | 680 |
| Travel / transport length | 6.56 |
| Travel / transport height | 2.50 |

